

The TAttler

Topcliffe and Asenby Times

Another Village Wedding

As previously mentioned, there just aren't enough weddings in Topcliffe so when one does come along everyone gets suitably excited and gathers together on the Trollopes' garden wall, leaving a gap of course so that Jen and John can watch the proceedings through their living room window. The atmosphere is always very merry and the ladies do like to admire the many gorgeous outfits on display and exclaim at the loveliness of the bride and her mum and, in this case, her gran.

Sally Dale was married at St Columba's at the beginning of the school summer holidays on a glorious summer day. She looked beautiful, the groom, Matthew, was dashing, and the wedding party colourful. The reception was held at Newburgh Hall in Coxwold.



Weddings - they provide an hour of happy entertainment for everyone.

Lots of Sunshine & Just a Few Tears

It's the time in the school calendar when many children break with the familiar and find themselves facing a bigger environment, whether it's 18 year olds moving to university; 11 year olds starting secondary school, or, as in this case, small children leaving nursery and joining the reception class at primary school.



The youngsters at Alanbrooke Nursery are always assured a wonderful send-off with their well-choreographed songs and their home-made mortarboards, not to mention their glowing reports and certificates. The audience of parents, carers, teachers and friends invariably find the whole proceedings highly emotional - lots of laughter but quite a few tears. Cakes, scones and very welcome cold drinks were served at the end of a hot and memorable morning.

Anyone for Table Tennis?

If you're not attracted to Zumba, averse to Aerobics and put off by Pilates, perhaps a fun indoor sport with a competitive edge may be the keep-fit activity you've been looking for. Cheap as chips, lively and safe, you'll be playing indoors during the winter months when night-time falls in the middle of the afternoon and the glorious summer we've so recently enjoyed becomes a distant memory.

There is no age limit, and no experience is necessary so, if you are interested, give Judith Lowe a call on 577911. The village hall will be the convenient venue for our new community sport.



Asenby News

BBQ:

An **enormous** thank you to those few of you who supported the village by coming to this year's barbeque, even if it was just popping down to buy raffle tickets. Unfortunately, however, the sun did not shine on us. This was a great disappointment to those who had spent hours putting up the marquees and preparing for the day but we hope that those who did come had a great time and enjoyed themselves - something much more important than making money! A special thanks to Mark Walker for the port-a-loo!

Christmas Shopping Trip - The Trafford Centre

This will take place on 30th November. It was sold out last year so if you would like a ticket, still only £10 each, please call Gail on 578228.

Mulled Wine evening

It's hard to believe I am sat in the sun writing about Christmas! However, the mulled wine evening will be on 15th December, so PLEASE keep the date free!

Asenby Institute

Pilates at the Village Hall

Monday 9-9.30am
KETTLE BELL PILATES

An energetic class, combining cardiovascular & toning exercises.

Monday 9.30-10.30am
MAT PILATES

Classic Pilates. Core strength work & stretching.

Tuesday 9-9.30am
KETTLE BELL PILATES

Classic Pilates. Core strength work & stretching.

Tuesday 9.30-10.30am
BALL PILATES CLASS

Gym balls & toning exercises. Help strengthen the core, improve balance and co-ordination.

Thursday 10.15-11.15am
MIXED EQUIPMENT PILATES CLASS

Certified Pilates Instructor and Sport Therapist. Please ring Nicole on 07887 581364 for more information or to book a place.

Proposed Hydro Electric Scheme Topcliffe Weir Update

We understand that a decision regarding a license to abstract water from Topcliffe Weir by UK Hydro Ltd will be made by 28th September 2013 and anyone who raised objection should be notified by email after that date. This date was originally put back whilst further environmental reports were prepared.

As yet there has been no visit organised to see the turbine at Mickley, nr Ripon, as was suggested by one of UK Hydro Ltd directors who is common to both projects. We are led to believe that the Mickley system is not currently operating as it does not fulfil certain standards regarding sound levels.

Any further news will be posted to local notice boards and future editions of The Tattler.

Topcliffe Mill Resident

Irresponsible dog owners!

Most dog owners who walk down to the Mill and beyond are responsible and it seems to be the minority who are not picking up after their dogs!! It's become really quite awful on the lane down to the Mill and despite there being posters reminding people of the bin at the sheep wash, there seems to be a certain few who think it's acceptable to let their dogs foul and not clean up after them.

It is illegal for dog owners to not pick up after their dogs. The dog warden is aware of the situation and will be patrolling the area (at various times) to issue 'on the spot fines'.

A Turner Electrical

Sowerby – Thirsk – North Yorkshire

Tel: 01845 522364 / 07726 456 536

agturner@aturnerelectrical.co.uk

Electrical contractor. We offer a friendly and reliable service and turn up on time! We are interested in work, not excuses! Free quotations, all job sizes considered



Proprietor: Andrew Turner B.Eng (Eng) Hons

Time To Say Goodbye & Thank You

At the end of October, after almost 15 years, I will be standing down from Hambleton District Council. It has been a huge privilege to have represented the Topcliffe Ward. Over the years I have come to know many of you, not just as your Councillor but as a friend. On many occasions you have asked for my help with planning, bin collections, traffic noise and speed to name just a few. I felt particularly honoured when you wanted to discuss confidential and personal problems with me. I thank you all for putting your trust in me at the ballot box and helping my majority to increase on every occasion. It is now time to handover to someone else and I wish that person every success in looking after Hambleton District Council issues for the Topcliffe Ward.

In the middle of November Lorna and I will be moving nearer to our daughter in the South West of England. It's been a difficult decision to make. We have lived here for 16 years and have enjoyed every minute but we must now put our sensible hat on. As the years advance, the move near to family is the correct step.

Thank you for the friendship you have always shown towards me. I wish everyone in Topcliffe a successful future.

Neville

Don't forget, until I step down please contact me if I can help: Cllr.neville.huxtable@hamblton.gov.uk

Up the Garden Path

There are two sayings which come to mind when describing Heather Holt who is just beginning a new venture in Topcliffe. One is "If you need a job doing well, ask a woman" and "It's not worth doing anything unless you do it well."

In the past she has been involved in dairy farming, having attended agricultural college, and more recently worked for several years with autistic children at Barnados. She has worked with disabled children and used to run a youth club in Sessay. She currently does part-time minibus driving for Queen Mary's School which she very much enjoys.

However, Heather is a doer and is keen to become self-employed as well. A lady of many talents, she is happy to take on gardening, dog-walking, shed clearing, cake baking, giving lifts, doing shopping or almost anything else you may need help with. She is CRB checked and stresses that she works for an hourly rate which she considers to be fair for everyone.

A resident of Dovecote Mews, Heather enjoys cooking, walking, keeping hens, gardening and general socialising. Up the Garden Path is the name of her new venture and she can be contacted on 578796 or 07752653034.

The Produce Show 2013

As ever the Produce Show revealed the many and varied accomplishments of Topcliffe and Asenby. Clearly there are lots of people beavering away in homes and gardens to create artwork, handicrafts, flower arrangements and scrumptious looking cakes and scones, jam and chutney. The fruit and vegetables put Tesco to shame and a few (too few!!!) children showed some delightful exhibits. Really, it's another world in the village hall, the day of the Produce Show.



There was all manner of exotic fruit from figs, quinces, medlars (I know, me neither) and grapes. Who knew that Topcliffe had the appropriate climate for vines? Flower arrangements included one by the winner which was actually displayed in a huge mushroom. As I said, it's another world out there, Dear Reader. I felt it would have been a friendly gesture to offer the press a sample of cake but that never happens, although some very sweet yellow raspberries came my way. Wine berries looked too good to eat, tiny, and juicy, while beans came in all colours, shapes and sizes.



The over-all winner this year was Peter Brown with Dave Bowman a close second. The photograph shows Judith Lowe presenting the cup.

**Just a reminder that
dogs are NOT allowed
on the playing fields
in Asenby and Topcliffe!**



"UP THE GARDEN PATH"

Does your:-

Lawn need mowing?

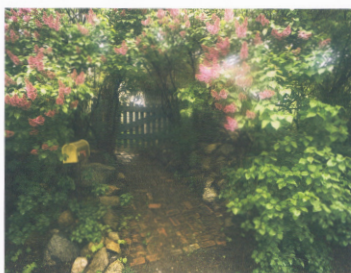
Dog need walking/ sitting?

House need a bit of a tidy or sort out?

Shed need clearing?

Shopping need doing? Or

Any other little jobs "Up your garden path" that I can help you with.



Then contact me, Heather, on 01845 578796 or 07752653034 and I will pop round and see if I can help you.

Please keep your trees...

Please keep your trees and bushes trimmed. Branches which overhang footpaths cause both inconvenience and a danger to the public when they have to step into the road to get past.



YOUR PARISH COUNCILLORS

Topcliffe	Asenby
Garry Key (Chairman) Cliff House, Long St. 578900	Peter Palmer (Chairman) Hilltop Farm 578057
David Bowman (Vice Chair) 21 East Lea 577843	Judy Lowe (Vice Chair) Green End Dairy 577911
Lynn Heidstrom 32 East Lea 577437	Mel Arkley Thistledhu, 7 Jamesville Way 578728
Mark Bowen 23 Manor Close 07703 040471	Grahame Marsden 8 Jamesville Way 578156
Amanda Jameson-Allen 77 Long St 07594 225254	Jacqueline Naylor Hayloft House 577059

Isobel Peters (Clerk)

Tel: 07739 258650 isobelpeters@googlemail.com

The Deer Shed Festival 2013

The Deer Shed seems to have been a fantastic success; certainly everyone who attended was full of praise for the organisation, performers, activities and friendly happy atmosphere.



A sunlit lively crowd

Here's what Oliver Jones, Festival Organiser, had to say:

"From our point of view the event was really successful and the weather was fantastic. So nice to set up the festival and not be sobbing at the amount of water lapping around your boots. The site was reshuffled this year and consequently the main stage is no longer pointing at Topcliffe which undoubtedly resulted in lower noise levels for residents over the weekend."



One of the star performers Willy Mason

If you need any more persuading that this was truly a festival for all ages, look at the Deer Shed website (www.deershedfestival.com) where you can see the official video. Brilliant!

The football season for Topcliffe starts on Sunday 1st September.

Topcliffe FC play in the Black Sheep Brewery, Hambleton League.

The 2012/13 season saw us play in the 3rd division, in such places as West Tanfield, Scorton and Osmotherley. After a good pre-season and the signing of a number of players including a replacement for Phil "the cat" Metcalfe, we were looking forward to a successful season. Our optimism proved to be right, as we blew away most of the teams, to win the league by 5 points, losing only 1 league game from 24 played, scoring 144 goals in the process and conceding only 35!

As well as winning division 3, we also made it to our league cup semi-final and the all divisional cup semi-finals. A special mention should go to Gareth Barber, who for the 2nd season in a row, netted over 50 league goals and also Luke Burnett, who made a great impact at the club in his first season as a 16-year old.

After a number of years supporting the club with food, beer, kit washing etc, John and Caz, from The Swan, decided it was time to step aside for this new season. As a club we'd like to thank John and Caz for their years of support both on and off the pitch. Obviously, being true football professionals, we desperately ran around, looking for a new watering hole and would like to thank everyone at The Angel for agreeing to take our motley crew in for this season.

We'd also like to thank John Mulley, from Topcliffe Post Office, for sponsoring us and putting his hand in his pocket to buy us a new kit, as well as a number of other local people who have agreed to purchase match balls for us this season - without their help and support, the club would struggle to buy items like these and invest in other training equipment.

Thanks must also go to Alistair Burnett, who has agreed to be chairman for this season, and to Jane, his wife, for her fantastic hot chocolates with marshmallows (no wonder all the team wanted to be a sub for the 2nd half of games!) and also her sewing skills, required to repair the kit.

For the 2013/14 season we have also managed to persuade a fully-licensed coach to put us through our paces during pre-season, and bring an air of professionalism to our squad - thanks John for giving up your Wednesday nights to do this. The difference is already beginning to show!

Traffic Incident

Thanks to another of our alert readers, we were able to capture photos of a potentially dangerous incident as it happened. A lorry lost a wheel in Church Street and hit another, causing a fire. The first photo shows the burning tyre, which can be seen at the feet of one of the firemen. The tyre's axle sheared and the tyre was thrown off. This occurred at 10.00am during the school holidays. Very fortunately no children/adults were about. Can you imagine the dangerous situation which could have ensued had it happened at a different time? As it was, a neighbour's car was badly damaged and is still away being repaired.



Photo number 2 shows the lorry mounting the pavement on the side of the road where there is a steep drop to the field below. This put unnecessary pressure on the supporting wall. There's also the question of the danger caused to pedestrians on that footpath.



Finally, I would like to thank all the players and supporters of the club for a fantastic 2012/13 season and here's to a great 2013/14 season in division 2.

If you'd like to know more about the club, you can contact Phil Metcalfe on 07565 967273 or come down to Winn Lane on a Sunday morning, and give your support to the team (fixture lists will be on view around the village).

Phil Metcalfe

Church Matters

Two Harvest Festivals

Topcliffe CE School will hold a Harvest Festival at St Columba's on Thursday October 3 at 10.30am.

There will be a Harvest Festival service in the church at 7pm on Friday October 11 followed by a bring and share supper.

Remembrance Service

On October 13 at 10.45am a Remembrance Service will be held for those who died when the Neptune plane crashed on the Mull of Kintyre on October 10 1956. A painting of the plane will be presented to Bernie Donders who has organised the service for many years.

A Service for All Souls

The service for All Souls Day, November 2, will include the setting of the Requiem Mass by Tomas Luis de Victoria. The service will begin at 7pm and is an opportunity to remember your departed loved ones, family and friends, whose names will be read out during the service.

Church Wardens:

Mr Chris Hewlett, Warren House, Thorpefield, Thirsk, YO7 3HJ Tel:524446

Mr John Phillips, Asenby Hall Asenby, Thirsk, YO7 3QR Tel. 577034

PCC Secretary:
Mrs Jenny Roberts, Plumtree House, Front Street, Topcliffe. YO7 3RJ

PCC Treasurer:
Mrs Liz Green, Winterberry House, Dishforth, Thirsk, YO7 3LP Tel. 578033

www.Topcliffe.net & www.Asenby.net

Keep up to date with Parish information, meeting minutes, a colour version of The TATtler and all the pictures of Topcliffe, Asenby and the surrounding area.

MacMillan Coffee Morning

A coffee morning in aid of MacMillan nurses will be held from 9.15 am on Friday September 27 in the village hall. You can look forward to a nice cup of coffee and a sweet treat!!!

It's Coming Soon!

Everything you'd always wanted to know about Superfast Yorkshire but were too afraid to ask!

Just take a look at these links if you want to be in the know. Impress all your computer geeky mates now.



www.superfastnorthyorkshire.com
www.superfastnorthyorkshire.com/faqs

The Topcliffe Educational Foundation

This charity makes small grants to students who have recently left school and are now in, or are about to start, university education or the equivalent, for the purchase of books. To be eligible the student must live in the old parish of Topcliffe, which is broadly the area now covered together with Marton le Moor.

Applications are sought in September/October and the Trustees meet in December to approve grants. Students who have received grants in previous years will receive an application to apply for 2013 automatically. Anyone seeking further information, wishing to apply or questioning eligibility should ring Geoff Hall on 578324.

Children's and Maternity Services at the Friarage Hospital

The consultation document, along with further background information and a survey to capture people's views on the options, can be found on the CCG's website at:

www.hambletonrichmondshireandwhitbyccg.nhs.uk





CL PARKER & SONS
Carpentry & Joinery Contractors
CL Parker and Sons
81 Long Street Topcliffe
YO7 3RL
T: (01845) 577 402
F: (01845) 595 808

www.greenoakframes.co.uk

**HAND-CRAFTED JOINERY - HISTORIC BUILDING
RESTORATION - PAINTING & DECORATING
CONTRACTORS - TRADITIONAL OAK FRAMED BUILDINGS**

New Faces at The Angel

It is true that in the years we've been editing The Tattler, there have been several stories along the lines of "The Angel has new owners and this time you're going to love it." The new owners start off well but then begin to lose their footing and, before we know where we are, things get really bad and we can't wait for them to go. Then everyone starts chuntering about the Good Old Days when Trish and Tony were in charge and how it's never been the same since.

However, this time there really is an air of optimism and things are definitely looking up. For a start the food is good. The fish and chips are said to be second to none and if anyone hasn't been happy with any meal they've been served, they've kept quiet about it, which, let's face it, is something that never happens. It looks a lot smarter inside, while the beer garden and flower beds are well-kept, tidy and welcoming. The bar staff too are polite and friendly which adds to the congenial atmosphere while the introduction of Comedy Nights attract yet more customers.

On a less positive note, Sunday night is Quiz Night and can attract anything up to 25 people. For some reason the teams are obliged to squash

themselves into the under lit Mulligan's bar and if they don't all fit, then they overspill into what used to be the sports bar. Traditionally the main bar was the venue for the quiz and it worked just fine. The participants are almost all locals and, as such, they deserve to be welcomed rather than tolerated.



Overall, The Angel is now a very good local pub with a menu that is fine for those who just want somewhere to go when they can't be bothered making tea, or for those looking for an excuse to push the boat out. Well worth a visit anyway.

Vicki Moores

Awarded for third consecutive year
"Highly Effective Setting"

Good Ofsted Inspection with "Outstanding" features



Children from 2 years old up to school age can come and join us at this warm, friendly and fantastic setting!

Government funding from 3 years old and above

NEW Opening Times

Term time

Monday & Friday

9.00am – 12.30pm

Tuesday, Wednesday & Thursday

9.00am – 3.00pm

Lunch Club everyday

(Packed lunch or cooked school dinner)

Fully qualified & dedicated staff

Please feel free to call us on 01845 578959 or visit us anytime!

Topcliffe Playgroup, The Portacabin, Topcliffe C of E School,
School Lane, Topcliffe, Thirsk YO7 3RG

Topcliffe Methodist Church Harvest Festival Services

Friday 11th October at 7.30pm
Speaker: Mr Paul Dunn (Helmsley)
Supper at the close.

Sunday 13th October at 6.30pm
Speaker: Rev. Andrew Bryer

Events at Queen Mary's School

There's lots going on at Queen Mary's which those of us who live in Topcliffe and Asenby may be interested in.

Saturday September 21:

From 1pm Dog Show will be held which will be great fun for all the family. Classes include The Waggiest Tail and Doggy Fancy Dress.

Saturday October 5:

Open Morning from 9.30am.

Sunday October 13:

Queen Mary's Equestrian Show

Saturday November 30:

Queen Mary's Chapel Choir Candlelight Concert at St Mary's Church, Masham.

Topcliffe Parish Council News

On behalf of the Parish Council, I hope that you all enjoyed the warm summer, the first for many years it seems. The administration of the council remains first rate and continues to deliver excellent value for your money in terms of public liability, collective responsibility and amenity. There are a number of issues I wish to make you aware of:

Advance Notice

The Highways Agency has notified the council that it intends to conduct resurfacing works on the southbound carriageway between the B1448 Warren Farm and A167 Topcliffe interchanges. The works will be carried out under contraflow and in order to minimise disruption they will be working 24 hours a day.

The works will start on **Sunday 21 September** and we expect the works to be completed by **Sunday 13 October**, subject to favourable weather.

During the works the southbound carriageway will be closed to traffic and this traffic will be switched to lane 2 of the northbound carriageway in a contraflow arrangement. Also, all of the existing central reserve gaps together with the southbound slips at the A167 Topcliffe and B1448 Warren Farm interchanges will be closed for the duration. Diversion routes associated with the closure of the slip roads will be clearly signed. Please allow additional time for your journeys.

Magna Carta celebrations.

The next meeting is scheduled for 27th September at Leicester. I intend to attend. The council still hopes to garner support for the event especially from local land owners, with minimum disruption. given the importance of historical tenants. A suggestion has been made that to commemorate the event we might consider reconstructing the Market Cross on Long Street, including a commemorative plaque. Research into the feasibility of this has commenced with enquiries with HDC, NYCC and English Heritage.

Car Parking - A number of residents have raised concern to me and the council of cars being parked on pavements obstructing access, particularly to wheel chairs and mobility scooters. This is especially prevalent to Front and Church streets, East Lea and Back Lane.. Unfortunately, this is a product of our time with high property prices, offspring staying at home and the need for cars for them to commute to work. By way of information, NY Police have rescinded responsibility for parking enforcement which is now held by HDC. The PC is

concerned that complaints may be passed to HDC and enforcement action taken by council officials. The pathways are public highways and should not, in an ideal world, be parked upon, but the PC recognises the practical need to do so in many cases. The PC recognises that this situation is unlikely to change and may indeed get worse and wishes to undertake a genuine and candid consultation and discussion with all residents as to what measures might, or could be taken to alleviate the situation. Any suggestions to the council please, and all will be considered. It might be that nothing can be done but someone may come up with a plan of genius!

The Play Park. The new external contracts seem to be working well and the contractors have proved to be flexible and meeting the needs of the public. Concern still remains over the treatment of the park benches which seem to have been subject to abuse - again. Congratulations to the village football team who have made a great start to the season in their new league. The PC is looking at procuring steel, moveable goal posts for this season.

Traffic. It has become noticeable that traffic, especially heavy trucks, seem to be violating the 7.5 tonnes weight limit (except for access) and speeding through the village in the early hours, braking hard and causing houses to shake. Application is in process to install radar speed and photography to record such traffic. A number of incidents have occurred at the junction of A168 and Long Street which pose potential for fatality and which are subject to road management enquiry.

The Angel. Congratulations to the Angel Inn on the fabulous refurbishment which has provided a major uplift to village amenity and street scene. The PC wishes them all success.

Au Revoir. Finally, in a letter in this Tattler, Councillor Neville Huxtable has announced his intention to leave the area for personal reasons and is subsequently resigning his seat at HDC, where he has served the needs of Topcliffe diligently, and as a former leader of HDC. Neville has been a staunch supporter of the wider Topcliffe community and a sage and mentor to the council. On a personal note I have become good friends over the years with Neville and his wife Lorna and wish them every happiness with their move to the South West. They will be missed in our community but have left a fine legacy of success.

Have a great Autumn and keep safe.

Garry Key - Chairman TPC

Topcliffe & Asenby Village Hall Reminiscences

Linda & I joined the committee soon after we came to Topcliffe in 1977. The hall, having been built in 1961, was then about 16 years old and in need of modernising.

Shortly after we joined, the Treasurer announced she was leaving so I naively volunteered to do the job. 3 years later, and a lot wiser, I handed this task over to someone else - I was worrying more about the Treasurer's job than my own! I took over as Chairman of the hall about 1990. At some stage, the committee was down to just 3 or 4 people - not enough for taking financial decisions - so I threatened to hand the hall over to the parish council. This worked a treat as several new members came out of the woodwork to join the committee!

The facilities in the hall were very limited in that there was only one function room - the main hall. The committee agreed that it would be a good idea to build an extension on the rear end of the hall, which would incorporate a downstairs room and an upstairs committee room. I set about the challenge of applying for grants and 2 years later in 1994 we had our new facilities, thanks mainly to a large grant from the Foundation for Sport and the Arts. Smaller grants were obtained from North Yorkshire CC, Hambleton DC, Harrogate BC and one or two others.

Someone hit on the idea of moving the very old historic table, which was stored in the Toll Booth and looking very sorry for itself, into the new upstairs room. Several strong men were needed to lift the table and manoeuvre it up the stairs, with about ½ inch to spare. Not very good forward planning! One of our committee members, Dave Bowman, did a superb job of cleaning the table of

numerous splodges of paint acquired whilst lying unloved in the Toll Booth. So the table has been saved for future generations.

Many other improvements have since been made to the hall. Another one-time committee member John Graham project-led a number of items including modernisation of the kitchen and toilets), a new storeroom, a new roof (goodbye to the old asbestos roof!), double-glazing, etc. In 2001/2 we had the old electric storage heaters replaced with modern gas heaters - with a subsequent huge improvement in cost-savings.



From left: Amanda Jamieson-Allen, Judith Lowe, Jane Graham, Ray Parkin, David Winfield, Alan Nuttall, Andrew Eckersley, Dave Bowman

All in all, the hall now looks very different from its days in the 1960s/70s. This is all thanks to the willing band of committee members -

especially my wife Linda, who has been Booking Clerk for I don't know how long. The hall is well used, thanks to our policy over the years of keeping the rates as low as possible but still making enough to cover our costs plus a bit more for capital items. Fortunately in the early years, when our capital was low, the parish council was always very generous in helping us. I left the committee at the end of the last financial year (April 2013) after 35 years' service, happy in the knowledge that the current committee will continue to do a great job in maintaining this very important feature of our village life.

Alan Nuttall

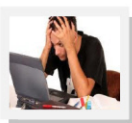
ComputerHelp@Home

Have a computer but don't know how to use it?
Always wanted to use the internet but don't know how?
Have a computing problem but don't know how to fix it?
Want to improve your computing skills?

Call Joanne on 07768 380634
or email chhtraining@btinternet.com
www.chhtraining.co.uk



Learn in the comfort of your own home



I also provide : Kindle & eBook reader advice and setup
Business and personal document creation

Tuesday Club, formerly known as Senior Citizens

The erstwhile Senior Citizens haven't let the hot weather keep them in this summer. And, equally importantly, they've changed their name to the more inclusive Tuesday Club. Everyone is very welcome to join the meetings, whether it's trips out and about, or spending a couple of hours in the village hall, learning something new and enjoying a friendly chat. Tea and cake are always a welcome part of the afternoon.

The last three meetings have involved a trip to Masham for an extremely good fish and chips lunch (other choices available) at Andrew Loveridge's cafe, then a tour of Theakston's Brewery. Everyone enjoyed refreshments, alcoholic or otherwise, in the cafe and had a pleasant mooch round the shop. This was an enjoyable day out and included a very scenic return journey in the minibus.

Ampleforth Abbey was the destination in August and here cider, as opposed to beer, was involved. Everyone agreed that the Abbey is definitely worth a visit. The surroundings are beautiful and the Visitors' Centre informative. After soaking up the calm and peaceful atmosphere, we enjoyed the justifiably famous Ampleforth apple cake in the cafe. The shop was extremely popular as everyone stocked up on Ampleforth beer and cider. Contrary to what Tattler readers might be thinking, the Tuesday Club is not made up of overweight tipplers.



Enjoying a tour of Theakston's Brewery are Dave Allen, Roy and Joyce Smith.

At the beginning of this month, Pauline Milross gave a demonstration on modeling clay when the group was encouraged to make Christmas decorations. Despite the very hot afternoon, everyone got into the festive spirit and some very attractive items were made, all ready for December.

Next month will be a trip to Ripon to look round the Town Hall and the Police Museum where there is a new display of past villains. Why not come along to see if you can identify any relatives? Ring Judith Lowe on 577911 or Linda Nuttall on 577315 if interested.

The TATtler

Fred Hand

Fred Hand, who died recently, was the epitome of an old-fashioned gentleman. He never failed to courteously touch his hat when greeting a lady and addressed everyone in a kindly and friendly manner. His gentle demeanour is missed by all those who knew him.



Fred was born in Hartlepool in 1924 and was one of eight children, two girls and six boys. He attended Hartlepool Grammar School and, during the Second World War, served in the Royal Navy escorting German prisoners-of-war to Canada and America. As a fluent German speaker, his role was that of translator. Following the war, he attended a teacher training college in Twickenham, which led to a position in a Hartlepool primary school. Fred later went to Newcastle University as a mature student, where he obtained a degree in history. He then taught the subject at Yarm Grammar School, and later Yarm Independent School. An excellent rugby player in his youth, he represented Hartlepool as an amateur.

Fred married Pauline in 1971 and had two daughters, Victoria, 39, and Clare, aged 30. After he retired he and Pauline moved to Deans Square where he enjoyed his garden, was a regular churchgoer and loved being surrounded by his family, especially his three granddaughters.



Domestic . Industrial . Commercial . Agricultural

Chris Moores

Phone: 07988607002

Email: chris.moores@hotmail.co.uk

Dalton (Thirsk) Ladies' Club

We are a group of mature, but young at heart ladies who meet at Dalton Village Hall on the second Thursday of every month at 7.30 p.m. On 10th October we are having a talk and demonstration by Wiltshire Farm Foods. We have speakers booked for the rest of the year and would be happy to see old friends and new, join us or come when you can. A warm welcome and a cup of tea guaranteed!

If you are interested, please call me, Rosemary Waller, on 577842.



Thank You

Thank you to Linda Nuttall for her kind support in my research throughout my project. It contributed towards a Master of Science degree in Sport and Exercise Psychology. The results of the research highlighted the importance of both age and physical activity on cognitive functioning.

I would also like to thank all of the participants who came down and got involved within the research. It was all very heart-warming.

Dean Watson

Snooker Club

At still only £20 a year, the Snooker Club situated in the Toll Booth, is excellent value. There are two tables, one full size and one three quarters; the club is heated, and you get your own key so you can play whenever you like. The club welcomes new members but under-18s must be accompanied by parents.



DOUGIE'S CHIMNEY SWEEP



Stoves, Fireplaces & Flue Linings Fitted
Professionally Fitted Chimney Cows & Bird Guards
All Roof & Chimney Work Undertaken
Tel: 01845 577071 / 07809 574446
www.dougieschimneysweep.co.uk

NORTH YORKSHIRE HEATING

**Gas, OIL, LPG,
& SOLID FUEL APPLIANCES**

Installation / Service / Repair

- Boilers
- Fires
- Central Heating
- Stoves

Call Steve Humphreys on



**01845 597865
or 07730 303923**



Fake Thackray by John Watterson (The Life & Songs of Jake Thackray)

Jake Thackray's satirical, witty, sentimental and saucy songs brought him fame through extensive TV programmes. John Watterson's celebration of Jake's life and work is full of the warmth, humour and sincerity you would expect from a life-long fan in a show that appeals to all ages. He threads together the original humorous and poignant songs with jokes and banter typical of Thackray's inimitable style.

John appeared at the Edinburgh Festival this summer, and toured as a support act with Fairport Convention last year. We are very lucky to have booked him to appear at the village hall on November 22.

Tickets, at £10, will be shortly available from Linda Nuttall on 577315 or Judy Lowe on 577911 for the show on November 22.

Judy Lowe

Local Telephone Numbers & Websites

Topcliffe Surgery - 577297
www.topcliffesurgery.co.uk

Friarage Hospital - 01609 779911
www.southtees.nhs.uk

Gas Emergencies - 0800 111 999
www.nationalgrid.com/uk

Police - 101 Textphone 18001 101
www.northyorkshire.police.uk

Hambleton DC - 01609 779977
www.hambleton.gov.uk

Harrogate BC - 01423 568954
www.harrogate.gov.uk

HDC Cllr Neville Huxtable 01845 501068
Cllr.neville.huxtable@hambleton.gov.uk

HBC Cllr Bernard Bateman 01765 640362
Bernard.Bateman@harrogate.gov.uk

Fun in the Park Topcliffe Play Area Monday 19th August 2013

On Monday 19th August Thirsk Children's Centre, North Yorkshire Youth and Youth Support Service visited Topcliffe Play Area for Fun in the Park to provide activities for children aged 1- 14 years.



85 adults and children attended the event, and had fun taking part in the different activities which were on offer, such as painting a canvas, making a windmill and decorating a biscuit.

North Yorkshire Youth provided lots of sports activities for the children and adults. The parachute games were very popular indeed.

Thirsk Children's Centre have organised 7 Fun in the Park events, which have taken place around different villages in the Thirsk & rural area and which have been really well attended. The Children's Centre has met lots of new families. This is great.

Thirsk Children's Centre would like to thank Topcliffe Parish Council for allowing them to hold the event and they hope to run the event again next year.

For further information about Thirsk Children's Centres activities, please contact 01609 533068.



See you all in 2014 for Fun in the Park



Editorial: Vicki Moores / Angela Hook - Tel. 578076: (E-mail: tattler@topcliffe.net)

Production: Charles Collinson - Tel. 578464