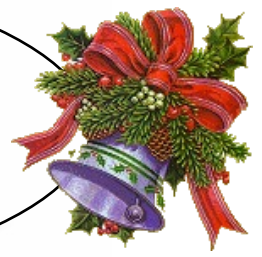




# THE TATTLER



Topcliffe and Asenby Times

## Allotment issue continues

The issue of the Asenby allotment land, off Carr Lane, continues to rumble on following Asenby resident Fred Gifford's successful discussions with the Land Registry which resulted in the land being removed from the Guy Reed Will Trust.

Fred had invited Asenby Parish Council to take over dealing with the matter and local councillors have decided they will seek official confirmation directly from the Land Registry.

The background is that in 2009 the land was erroneously registered as being owned by Guy Reed and in 2021 land agents working on behalf of the Guy Reed Will Trust parcelled up the site in a land sale transaction.

That's when Fred Gifford, a trustee of the allotment society, decided to try and put the matter right. He researched the background and determined many facts that made it clear that the Guy Reed Will Trust did not have rights to the site.

He produced evidence that the three-acre site was given in George Rockcliffe's will to Asenby Parish Council in 1735 to be used for the poor of the parish. And according to an excerpt from a later Commissioner's report, the land was rented to two farmers for seven shillings which was 'added to and distributed with the share of the general parish fund received for the poor of Asenby'.

In later years, specific mention is found of the site being used as 'gardens', the then term for allotments. Fred found a nineteenth century minute of the Asenby Allotment Charity which showed who had allotments at that time and how money, together with wood, beef and tea, was distributed among villagers in need.

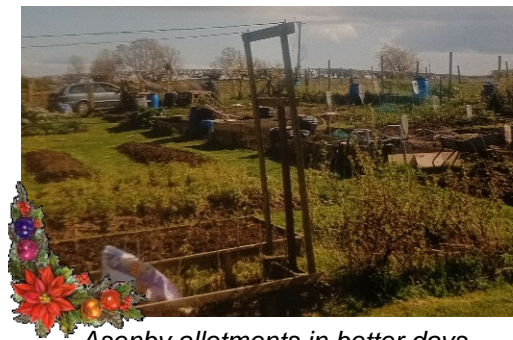
Another piece of evidence was in minutes of Asenby Parish Council which shows that the Parish Council negotiated with the old North Riding County Council which wanted to buy some of the allotment land to widen



*Fred Gifford - campaigner*

Carr Lane. The Parish Council completed a sale and gave the money to the allotment charity for investment.

Armed with these facts, Fred Gifford entered into protracted correspondence with both the land agents and the Land Registry and on 20 October 2022, the Land Registry confirmed in writing that the land had been removed from the title deeds of Guy Reed Will Trust.



*Asenby allotments in better days*

Asenby Parish Council has been informed of this result and Fred hopes that it will take on responsibility for registering the land for the parish so that the allotment charity will not

face any future disputes over use of the land. Following a Parish Council meeting held in November, councillors decided to contact the Land Registry for official confirmation that the land belonged to the parish to enable them to register it.

Fred Gifford hopes they will end up with the same result and conclusion he did.

## The Village Christmas Tree

This issue of The Tattler went to print before the village's Christmas tree was erected so it's not possible to present the usual beautifully decorated tree in place outside the Village Hall.



But there'll be plenty of opportunity for everyone to see it as they pass along Front Street.

This year the Village Hall Committee and Topcliffe Parish Council have shared the cost of buying the 15' Nordmann tree and volunteers gave up their time last weekend to erect and decorate it.

## Trees on sale in Topcliffe

If you haven't ordered a Christmas tree yet there's a chance to buy one here in Topcliffe. This festive season, Josh Barningham is selling trees from the family farm on Long Street. The Yorkshire-sourced Nordmann trees measure 4 to 8 feet and can be fresh cut or potted. Enquiries and orders - 07716 334211 or via Facebook.

## Remembering fallen heroes

It's called Remembrance Day so let's cast our minds back to 13 November - the closest Sunday to Armistice Day, when we mark the end of World War II and we think about those who fought and died to protect their country.

Here in Topcliffe the event could hardly go unnoticed as there were poppy decorations festooning Jubilee Gardens, St Columba's Church, the Village Hall and Topcliffe Post Office.



*Jubilee Gardens*

These wonderful decorations were created by the ladies who attend the regular Knit & Natter group held at The Angel every Thursday afternoon.



*Post Office soldier*

## P. Bumby & Sons

### Chimney Specialists

- Chimney Sweeping
- Stove Installations
- Stove Servicing
- Cowsls & Baskets Fitted
- Chimney Repairs



**Tel: 01845 577483 Mob: 07921 074934**

## Topcliffe Bridge Repairs

North Yorkshire County Council has provided an update on planned repairs to Topcliffe Bridge. The tender documentation for the construction of the new bridge parapet has been published with responses from companies to be returned by 16 December. The contract will require completion of the work by the end of the financial year (31 March 2023).



## Art classes at the Village Hall

There's a wide choice of art classes scheduled at Topcliffe and Asenby Village Hall over the next couple of months, all hosted by talented artist and teacher Rebecca Jayne.

Thursday 15 December - How to paint a hare, fox or owl in a moonlit winter landscape using acrylics. The cost is £25 and this includes all materials needed to complete your masterpiece. Refreshments will be provided. 10.30am to 1pm.

Monday 9 January - a new series of the popular weekly art classes will start and run until 7 February. 10am to 12 noon. Bring your own materials and create works you will be proud of.

Saturday 30 January - 10am to 1pm - Painting on Fabric - helpful tips and techniques for creating your own vibrant painting on fabric. Equipment and paint provided. Refreshments included. Just bring your fabric item - Denim Jacket, purse, bag, baseball boots, cushion cover, table runner or other item. On booking, further details will be sent about the session.

All of the advertised art classes are for artists of every level of experience... or of none! Expert guidance is offered throughout the sessions. More information and online booking at [www.rebeccajayneartist.co.uk](http://www.rebeccajayneartist.co.uk)



*Happy artists at work*

Editorial & Advertising Sales: Doug Allan ([doug@dougallan.co.uk](mailto:doug@dougallan.co.uk) or 07785 223707)

Production: RedKiteIT Limited [www.redkiteit.co.uk](http://www.redkiteit.co.uk) - Website Design - IT - Software Development

Printing: Beyond Digital [www.beyonddigital.co.uk](http://www.beyonddigital.co.uk) - for Event Banners - Roller Banners - Signs - Magnetic Vehicle Signs - Leaflets - Construction/Heras Fence Mesh Branding



## Successful Christmas Fayre

The Christmas Fayre held last month in Topcliffe & Asenby Village Hall was a great success with plenty of people popping in to check out the craft stalls, which offered a fascinating range of ideas for Christmas presents.



Joanne Brierley at her stall

The organisers - led by Karen and Malcolm Morley, Linda Carver and Linda Robinson - did a wonderful job of pulling the event together and providing lunch and refreshments throughout the day.

They raised £264 which will go towards maintaining the Village Hall, which like households, is impacted by recent cost of living increases.

A special mention for Karen's sister, Susan Hammond, who ran a tombola stall and raised £135 - which was shared between Animal Crew Rescue and the Topcliffe Warm-Up Community Help Fund.



Festive display at Christmas Fayre

### Nominate a local company for an award

Everyone is being encouraged to nominate businesses or individuals from across Hambleton in Hambleton District Council's annual Business Awards. The awards ceremony is an opportunity to celebrate business success in the area and the council is keen to receive nominations for those businesses and individuals people think should be recognised for their achievements.

There are plenty of wonderful businesses serving our local communities so maybe they deserve an entry in these awards. It's likely that simply being in the awards line-up would be beneficial and give businesses a boost. Are you prepared to nominate one of our local incredible businesses? The closing date for nominations is Saturday 31 December. For the categories and how to enter see [www.hambleton.gov.uk/businessawards](http://www.hambleton.gov.uk/businessawards)

For further information please email: [julie.hutton@hambleton.gov.uk](mailto:julie.hutton@hambleton.gov.uk)

*Come in and enjoy*

THE MAGIC OF

THE SWAN

George and Jane look forward to seeing everyone this Christmas and New Year.

Thank you for making 2022 such a great success.

It has been our pleasure to serve you.

Food, Drink & Accommodation



THE SWAN • FRONT STREET • TOPCLIFFE • YO7 3NZ

01845 595185



## Goodbye to Nataliia

On the 10 of November, our Ukrainian guest, Nataliia, left us to return to Ukraine. She lived with us for just over six months and for most of that time, she worked as a hotel receptionist at Crab Manor, where she was highly thought of.

Her decision to return to Ukraine was quite sudden and we weren't expecting it so soon. It was difficult for us to understand why Nataliia would want to return to a life of considerable hardship and danger, but her sense of duty to her family seemed to be at the centre of her decision. None of us know how we would react in the same situation and so all we could do was support her in her choice to return.

Overall, inviting Nataliia has been a very positive experience for us and we grew quite close to her during the time she was here. It was extremely sad waving her off at Northallerton station, not knowing what the future would hold for her. She flew from Stansted Airport to Warsaw and then travelled from Warsaw to Kyiv by bus - a long and uncomfortable journey. In Kyiv she was met by her sister Anya and after a couple of days, they travelled together to the country cottage to see their parents.



*Nataliia with Liz & Dave*

Living conditions in Ukraine are extremely difficult, with long power cuts, cold weather, food and fuel shortages and very little access to the internet. The internet is very important in Ukraine as it is the only way that people can find out what is happening in their country. We are maintaining contact with Nataliia via WhatsApp and we are sending her news articles about Ukraine to her whenever we can, though sometimes it will take two or three days for her to be able to pick up our messages.

At the time of writing, Nataliia and her sister are again at the apartment in Kyiv and recent missile attacks on the capital have left them without power, water and internet. She describes total darkness as she looks out of the apartment window and says it's 'as if the world has died'.

There has only been one downside of taking in Nataliia - we miss her! It's very hard to let go of someone who has become like family and we are left worrying about her and her family. We just hope that this awful war ends soon and that the people of Ukraine can once again be independent and live in peace.

We would like to thank all those people in Topcliffe and Asenby who helped Nataliia while she was here and we can tell you that she really appreciated your support and friendship.

*Liz and Dave Marsh*



## Topcliffe Parish Council Update

### Eldmire Farm planning application and HGV traffic

Hambleton Council's planning committee approved the Eldmire Farm development on the Dalton Industrial Estate. Forty four people from Topcliffe and Asenby, as well as the two parish councils, expressed their concerns about the proposals. Like most villagers, Topcliffe Parish Council is content to see new developments and the jobs that come with them, but only if guaranteed conditions are attached to protect our villages from illegal HGV trespass.

The Parish Council fought hard to ensure the planning committee, county highways department and the developer fully understood the strength of feeling within our villages and thankfully a string of suitable conditions was attached to the final approval.

The developer has agreed to provide funding for smart ANPR cameras (Automatic Number Plate Recognition) at the entrances to the local Weight Restriction Zone. This funding will be provided direct to the Parish Council.

Funding for new signage for the A168 and other local roads has also been provided by the developer and agreed with the county council's highways department. However, this still requires approval from the Government's Highways Agency which controls the major road network.

In total, as the development of Dalton Industrial Estate proceeds over the next few years, close to £120,000 will be made available by various developers to control and enforce traffic restrictions in and around our villages. All this is good news, but it all relies on the local and national highway authorities implementing the changes and, above all, enforcing the existing Weight Restriction Zone. So far, the county council, to put it mildly, has been dragging its feet and failed to do what the law requires it to do, in spite of funding becoming available. This is simply not good enough and the Parish Council intends to keep the pressure on in every way it can.

A big thank you to all of the villagers who took the time to comment on the Eldmire Farm plan and helped make sure that the planners realised the strength of local feeling.

### Playing Field

Hambleton Council has transferred ownership of the village playing field to Topcliffe Parish Council.

Looking to the future, the Parish Council launched a questionnaire seeking the views of villagers about what sort of improvements might be desirable. A number responded and ideas for consideration included:

Provision of new play equipment

A path to provide better access for those with disabilities and parents with prams

Space for allotments

Tree planting and features to encourage wildlife.

The likely cost to implement these ideas is over £100,000 so the Parish Council is looking at ways it might raise the capital and will develop a plan to carry out these suggestions as funding is secured.

Some initial tree planting will happen this year courtesy of the Woodland Trust and John Pearson, who was responsible for gaining approval and supply of trees.

### Front Street - sewage odours

This problem of bad smells from sewage outlets has been an ongoing problem in parts of Topcliffe, particularly on Front Street. Some while ago, Yorkshire Water accepted responsibility for resolving this once and for all, but the company has failed to sort it out. Now Hambleton Council's Environmental Health department and the Parish Council are putting pressure on Yorkshire Water to urgently do the necessary work and are threatening legal action to force them to do what they promised.

### **Swimming Superstar**

Seven-year-old Summer Kniveton is a swimming star...and that's official!

Last month Summer, who lives at Alanbrooke Barracks, decided she needed to do something to help her school to raise the cash needed to build a new classroom.

As a regular swimmer with the Swim Perfect Club, she naturally decided that a swimming marathon was for her. So, the Great Ouseburn Primary School pupil took to the water and completed an amazing sixty-six lengths - that's just one length short of half a mile - of the pool at The Crown Hotel in Boroughbridge.

Better still, she managed to raise £250 for that all important new classroom at her school. Well done Summer!



**Traditional fish and chips  
Available for parties,  
functions, weddings,  
christenings, etc  
a perfect catering idea!**

**We also have a local village round. See our  
web page or find us on Facebook**

**Topcliffe Friday 5 - 7pm**

**TEL 07515 422202  
or 01845 595967  
www.chipndales.co.uk**



## Community Warm-Up

Warm-Up lunches are held at the Village Hall every Wednesday between 11.30am and 1.30pm. The lunches are open to anyone who wishes to come along. Volunteers even deliver lunches to those in our community who are unable to get to the hall in person.

Each week a portion of the funds raised is donated to a local charity, all of which have been nominated by the organisers or other villagers. The balance goes into the Warm-Up Community Help fund which helps pay for food in future weeks. The organisers are looking at ways of further helping any villagers in particular need during these financially difficult times.

If you can donate any pre-prepared meals, such as soup or a casserole, or even just ingredients that others can cook to make meals, or if you would like to help in some way, please get in touch with Karen Morley on 577426 or Linda Carver on 578014.

## Snooker Club

Membership subscriptions for the snooker club are now due. The fee for this year has gone up to £30 because of increasing energy costs. Existing and new members should arrange payment to David Bowman as soon as possible. Members who do not plan to remain in the club are asked to return their door key to David Bowman. He can be contacted on 577843.

## Ripon canal boat trips

Fancy a festive trip along Ripon canal this Christmas? Tickets are now on sale for the winter warmer canal boat trips on Saturday 17 and Sunday 18 December. Trips take 45 minutes and start at 1.30pm. Tickets are £8.50 each and are available from Cathedral View Cafe, Ripon. Price includes homemade mince pie or chocolate brownie option (gluten free and vegetarian options), mulled wine/fruit punch. For children hot chocolate with all the trimmings is on offer.



*Pride Of Ripon Narrowboat*

# THE ELM GALLERY

Front Street, Topcliffe



**Late night opening every Wednesday until Christmas**

**ORIGINAL PAINTINGS, PRINTS, CARDS & BEAUTIFUL HAND MADE GIFTS**

### OPENING TIMES

MON - CLOSED  
TUE - CLOSED  
WED - 10 TO 5.30  
THU - 10 TO 5.30  
FRI - 10 TO 5.30  
SAT - 10 TO 5.30  
SUN - 12 TO 5.30



### CONTACT DETAILS

01845 577316  
07709 223920

[lizanddave@the-elm-gallery.co.uk](mailto:lizanddave@the-elm-gallery.co.uk)







## Help a hedgehog

When was the last time you saw a hedgehog in your garden? If it's recently you are lucky. There are fewer than one million of these prickly creatures left in the UK - down 30 per cent since 2002, which is a rate of loss similar to that of tigers globally.

Life could be much easier though... hedgehogs just need access to lots of our green spaces to survive. Yet the more we develop our gardens and community areas, the more we potentially push out this sort of natural wildlife.

All the humble hedgehog needs is for us to make a few really simple changes which could make all the difference. You have an opportunity to help a hedgehog get ready for winter as well as improve its life when it emerges again next spring.

Dubbed the gardener's best friend because they eat unwelcome species, a healthy hedgehog can travel up to 2km every night and cover 20 hectares looking for food and shelter. However, it cannot get through fences and walls without help. So perhaps the easiest way to do this is to give it access in and out of your garden on all sides of your boundary. Hedgehogs need quiet and safe places to shelter - an undisturbed dry spot against a fence or wall is good and it's simple to create the right environment with what's lying around in your garden already. Rake together a pile of dry leaves against a wall or pile up some logs or branches to provide a home.

At times when other food is scarce hedgehogs appreciate extra rations. Bread has little nutritional value for them and they are lactose intolerant so avoid bread and milk. Instead put out shallow saucers of wet dog or cat food in the evenings.

Just a little help is all that's needed...and if you're lucky you'll have hedgehogs running through your garden on a regular basis.

### Textile recycling

The next Bags2School textile recycling event will be held on Monday 23 January 2023. If you're having an annual clear out of cupboards and wardrobes in the New Year, please save your discarded clothing and other unwanted items. You'll be able to drop off your bags of textiles at the Village Hall between 8.30am and 12 noon. If you have trouble storing the bags, contact Donna Fleming (07591 438766) or Doug Allan (07785 223707) and they will try to make arrangements for storage until the collection day. The proceeds of the event will be shared between the Village Hall and 1st Topcliffe Scouts.

*Just as a reminder, the following items are welcomed: men's, ladies and children's clothing - paired shoes (tied together or elastic band around) - handbags - hats - bags - scarves and ties - jewelry - lingerie - socks - belts - soft toys - household linen - household curtains - household towels - household bedding (bed sheets, pillow-cases and duvet covers). We are unable to accept duvets and blankets, pillows and cushions, carpets, rugs and mats (including bath, shower and toilet mats), soiled, painted, ripped or wet clothing, school uniforms, corporate clothing and workwear or textile off cuts or yarns.*



## New Horizon Composite Door Specialist

www.newhorizondoors.co.uk email: paulstoves22@gmail.com

### CREATE AN ENTRANCE



with a ...

- Stylish
- Secure
- Stunning

Composite Door from

## New Horizon

North Yorkshire's Finest!!!



Paul - Owner / Installer

Call  
NOW!

tel: 01845 595919 / 07801 496603



## Ultra 7 in 7 Challenge

Rugby League legend Kevin Sinfield OBE visited Thirsk on his epic Ultra 7 in 7 Challenge that saw him raise over two million for the MND Association and the appeal to build the Rob Burrow Centre for MND in Leeds.

His marathon run saw him cover 40 miles on seven consecutive days, arriving at Old Trafford at half time during the men's Rugby League World Cup final.

Asenby parish councillor, Malcolm Sollitt, representing Thirsk Rotary Club, met Kevin during a break at Thirsk Garden Centre and handed over a cheque for £500. He said: "Kevin is a truly humble and remarkable man, and it was a great pleasure to meet him and to hand over a cheque to boost his fundraising effort. It was lovely to see him spend so much time chatting to those who had turned out to cheer him on."



Carol Jordan and Malcolm Sollitt of Thirsk Rotary Club present £500 cheque to Kevin Sinfield.

### Interested in Thirsk Rotary?

Any reader who wants to know more about Thirsk Rotary can contact club secretary Geoff Colls on 578161 or e-mail [geffry.colls@btinternet.com](mailto:geffry.colls@btinternet.com)

### Knit and Natter

The popular Knit & Natter club meets at 1.30pm every Thursday afternoon in the TV lounge at The Angel. The cost for refreshments remains at £3 and everyone is welcome to attend, whether for a knit, just for a natter or both!

The last pre-Christmas meeting is on 22 December and then there'll be a festive break, with the next session on Thursday 5 January.

### Pensioners' Christmas Lunch

This year's Christmas lunch will be held at Topcliffe & Asenby Village Hall on 13 December at 12.30pm. The cost for a three course Christmas lunch with drinks and entertainment is just £15 (a price that is considerably subsidised). As The Tattler went to print there were a few places left, so if you haven't booked yet, please contact Judith Lowe on 577911.

### The Sunday Email

Next week's Sunday Email will be the 137th edition. Anyone who wants to be added to the circulation can register by going to [www.dougallan.co.uk](http://www.dougallan.co.uk)



A MARKET GARDEN, GROWING OUR OWN VEGETABLES, REARING OUR OWN MEAT, WITH A TAKEAWAY SHACK USING OUR OWN PRODUCE.

OFF THE BEATEN TRACK, CATTON, THIRSK, NORTH YORKSHIRE YO7 4SG

[the\\_catton\\_kitchen/](https://www.instagram.com/the_catton_kitchen/)

07747 083 155 | [Hello@thecattonkitchen.co.uk](mailto:Hello@thecattonkitchen.co.uk) | [www.thecattonkitchen.co.uk](http://www.thecattonkitchen.co.uk)



## Positive news for Topcliffe

I have been pleased to support Topcliffe Parish Council as the recent planning application for Eldmire Farm has progressed through to approval, with special conditions that will help protect local villages.



The development will bring much needed employment and also bring us another step closer to dealing with the HGV issues in Topcliffe and surrounding villages.

As Hambleton Council Leader and representative for Sowerby and Topcliffe, I am actively continuing to support projects in local communities by ensuring distribution of monies generated as part of development throughout Hambleton, known as the Community Infrastructure Levy. I am confident that funding from this scheme will be

approved for major developments planned at the Playing Field in Topcliffe.

I have also created two separate funds that will support local food banks and warm space projects. These funds will help sustain the work of organisations, like the voluntary Community Warm Space in Topcliffe, which are doing vital work during current challenging times.

May I take this opportunity to wish all residents a very Happy Christmas and a peaceful New Year.

*Councillor Mark Robson  
Leader of Hambleton District Council  
and ward councillor for Sowerby & Topcliffe*

## The Repair Cafe

The next Repair Cafe will be held at Thirsk Library on Saturday 10 December between 10am and 2pm. Be greener by avoiding waste and save money by letting a team of dedicated and talented volunteers try to repair your broken or worn-out items. Bring clothes, furniture, computers, small appliances, toys, phones, tools or anything else needing attention.



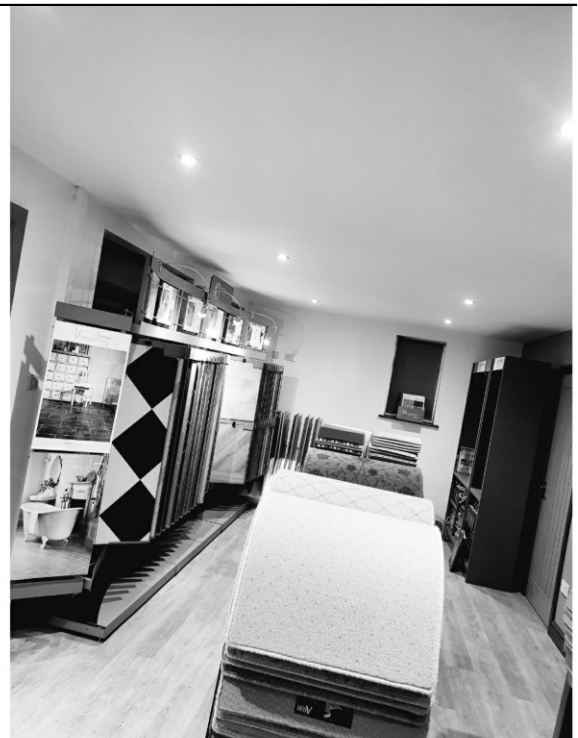
*The Repair Cafe*

# JOHN ASTON FLOORING

Our showroom is open!

Unit 1, Carr Lane  
Asenby, Thirsk, YO7 3PF

01845 421111  
info@johnastonflooring.co.uk



We supply a vast range of flooring from quality, well known brands, including Karndean, Amtico, Ted Todd, Alternative Flooring, Roger Oates, Ulster, Riviera, Brintons, Cormar, and many more.

 Follow us on Instagram and Facebook 



## Energy Saving Tips

With the cost of living on the rise, there's never been a better time to cut your energy bills and be kind to the planet. Over half of the energy costs in most homes goes on heating and hot water, so it's really important to look at home heating habits to see if there are small changes that can be made to reduce heating bills. Supplier EDF has put together these tips for its customers, but they are just as relevant for everyone.

Turn down your thermostat. Just one degree lower could save you up to £128 a year. Set a timer on your thermostat for your heating to come on only when you need it.

Turn the heating flow temperature down on your boiler from 80% to 60% to save up to £112 per year. Such a reduction cuts the boiler's energy consumption, without lowering the temperature of your home. This isn't suitable for all systems so check your boiler instructions or contact your supplier. Don't heat empty rooms. Individual radiator thermostats mean you can adjust the temperature in each room accordingly.

Keep doors between adjoining rooms shut. This way, you stop the heat from escaping.

Run your heating for an hour less each day. Even using a little less energy each day adds up to savings over time.

Bleed your radiators. Trapped air can make your radiators less efficient, they'll be slower to heat up.

Keep the heat in. Simply closing your blinds or curtains in the evening can also stop heat loss by up to 17 per cent. Just be sure your curtains don't cover the radiators.

## Asenby Institute needs you

Asenby Institute is urgently seeking new committee members after the three current committee members resigned at the AGM on Wednesday 23 November.

The Institute has a long history in the village, initially organising the building of the village hall and the weekly events held there. The hall has since been demolished and more latterly the Institute took on the task of developing the recreation field and playpark through fund raising and grant applications. The responsibility for the recreation space has now reverted to the Parish Council.

Until Covid struck, the Institute organised the village's successful festive mulled wine and mince pie evening as a charity fund raiser, donating over £1,000 to Herriott Hospice over recent years. This year, the Institute sought and received a grant from Harrogate Borough Council which facilitated the installation of the bespoke Platinum Jubilee Bench.

The committee has shrunk over the past years and now Siobhan and Fred Gifford and Joy Port are hoping that new energetic volunteers will breathe new life and enthusiasm into the work of the Institute. They have all agreed to remain as 'caretaker' committee members until a Special General Meeting on 11 January 2023. In the meantime, anyone interested in finding out more about becoming a committee member is invited to ring Siobhan on 578300 or 07966 228206.

## Christmas Services at St Columba's

Sunday 18 December at 6.30pm - traditional service of Nine Lessons and Carols, with St Columba's Choir, led by Linda Hewlett, accompanied by Matthew Atherton on the organ. Carols new and old and an opportunity to come and sing your favourites followed by finger food and wine.

Christmas Eve, Saturday 24 December at 2pm - Crib Service with Rev'd Dawn Ward. An informal telling of the Christmas Story for everyone to enjoy, particularly those with children.

Christmas Eve at 11.30pm - Midnight Mass - the Christmas service of Holy Communion for everyone, with Rev'd Robert Williamson.

## Carol Singing in the Village

On Thursday 22 December at 7.30pm there'll be carols around the Christmas tree outside the Village Hall. Everyone is welcome, so do come and sing. Please bring torches to read the carol sheets that will be provided. Brass accompaniment will be provided by the Barber family and the singing will be aided by members of St Columba's Choir. Afterwards enjoy mulled wine and mince pies inside the Village Hall with seasonal good wishes from all at St Columba's. Our Christmas Charity is local MacMillan Nurses, and any donations will be very gratefully received.

## Regular Sunday Services in December and January

11 December at 10.45am - Holy Communion, Rev'd Robert Williamson

18 December at 10.45am - Said Matins

25 December and 1 January - No Service

8 January at 10.45am - Holy Communion and 6.30pm Choral Evensong for Epiphany

15 January at 10.45am - Choral Matins

22 January at 10.45am - Holy Communion

The Parochial Church Council and Churchwarden would like to wish all in our two villages a very Happy Christmas and warmest best wishes for the New Year.

## Christmas learning at Thirsk library

Children aged up to 11 years are invited to pop along to Thirsk Library's free drop in event with lots of Christmas activities between 10am and 2pm on Monday 19 December. Christmas crafts, games, reading, drawing, colouring and lots more. Email for more information or just turn up and join in. [charlottetaylor@darlington.ac.uk](mailto:charlottetaylor@darlington.ac.uk)

## Rural Arts launches spring programme

As Rural Arts approaches its 30th anniversary it has announced plans for an amazing programme of events for adults, children and families, including workshops, exhibitions, music and dance performances and lots more. Rural Arts is based at The Courthouse in Thirsk.

The full programme can be checked-out at: [www.ruralarts.org](http://www.ruralarts.org)



*The Tattler production team, Doug and Charles, wish all readers a very merry Christmas and a happy and prosperous New Year.*



## Topcliffe & Asenby Village Hall

The Village Hall is available for hire to local organisations, businesses and individuals. It offers excellent facilities for a wide range of events including art and exercise classes, meetings, exhibitions, fayres, social events and lots more.

The Village Hall Committee has introduced the Hallmaster online booking service. This is accessed via the village website - [www.topcliffe.org.uk](http://www.topcliffe.org.uk) and allows enquiries and bookings to be made directly online. We no longer have a Bookings Secretary.

### Main Hall hire charges to May 2023

Regular activity user (clubs/classes) - £10 per hour  
Topcliffe/Asenby residents - £12 per hour  
Non-residents - £18 per hour  
Residents' children's party - £12 per hour  
Non-resident children's party - £18 per hour



## Regular Weekly Activities

### Monday

Art classes with Rebecca Jayne - 10am to 12 noon.  
Boot Camp Fitness - 6.30 to 7.30pm.

### Tuesday

Lianne Ayling - Fitness Class - 9.30 to 10.15am  
Boccia Club - 1.30 to 3.30pm.  
Library - 1.30 to 3.30pm.  
1st Topcliffe Squirrels and Beavers - 5 to 7.15pm.

### Wednesday

Community Warm Hub Lunch - 11.30am to 1.30pm  
1st Topcliffe Cubs - 6.45 to 7.45pm.

### Thursday

Pilates - 6.30 to 7.30pm.  
Indoor Carpet Bowls - 7.30 to 9.30pm.

### Friday

Boot Camp Fitness - 6 to 7pm.  
1st Topcliffe Scouts - 7 to 9pm.

### Regular monthly meetings and other events

Topcliffe Parish Council meeting - meets at 7pm on 2 February 2023.  
Asenby Parish Council meeting - meets at 7pm on 9 January 2023.  
Topcliffe & Asenby Village Hall Committee - meets at 7.30pm on 17 January 2023

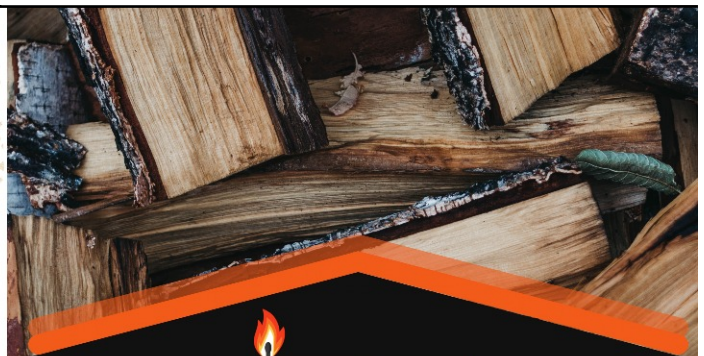


Come and join us at Winn Lane Farm for real fresh cut or potted Christmas trees from Yorkshire.

## Opening times

Friday 2nd December 2pm-4pm  
Saturday 3rd December 10am-3pm  
Friday 9th December 2pm-4pm  
Saturday 10th December 10am-3pm  
Sunday 11th December 10am-3pm  
Friday 16th December 2pm - 4pm  
Saturday 17th December 10am-3pm  
Sunday 18th December 10am-3pm

Orders can be placed from 15th November.  
Collection and delivery can be arranged outside opening times. Please call Josh on 07716 334211 to order



Locally Sourced

Seasoned Hard Wood Logs,  
Coal, Kindling And Natural Fire  
Lighters

Topcliffe, Thirsk

To order please email or leave a  
message on

01845 868798  
LOGS@JAB-AGRIC.CO.UK



Wishing you a Merry Christmas & Happy New Year  
FROM THE TEAM AT THE ANGEL WE'D LIKE TO  
THANK YOU FOR YOUR LOYAL SUPPORT

**FABULOUS  
FESTIVE MENU**

1st - 24th December  
Monday - Saturday | Lunch & Evening

BOOKINGS  
NOW  
TAKEN

**THE ULTIMATE  
CHRISTMAS PARTY**

3 Course Dinner & Disco  
Friday & Saturday Nights in December

DETAILS AT  
[www.theangelatopcliffe.co.uk](http://www.theangelatopcliffe.co.uk)  
OR POP IN FOR A  
FESTIVE BROCHURE

**CHRISTMAS  
DAY**

5 Course Lunch  
12-12.30pm or 3-3.30pm



BOOKINGS  
ONLY

**NEW YEAR'S  
EVE**

3 Course Dinner  
Followed with DJ in the Bar  
5pm - Late



**Welcome in 2023 with a Tasty New Year's Day Brunch**

- BREAKFAST 10-11am | The Angel Full English, Eggs Benedict...
- PUB FAVOURITES 12-6pm | Beer Battered Haddock, Steak & Ale Pie...
- TRADITIONAL SUNDAY LUNCH | Children's Menu & Sweet Treats

BOOKINGS  
NOW TAKEN!  
10am - 6pm

For further information please call 01845 578 000 or visit [www.theangelatopcliffe.co.uk](http://www.theangelatopcliffe.co.uk)

COMEDY NIGHTS 1st Tuesday Every Month | Advance Tickets ONLY £10 INCLUDES NIBBLES